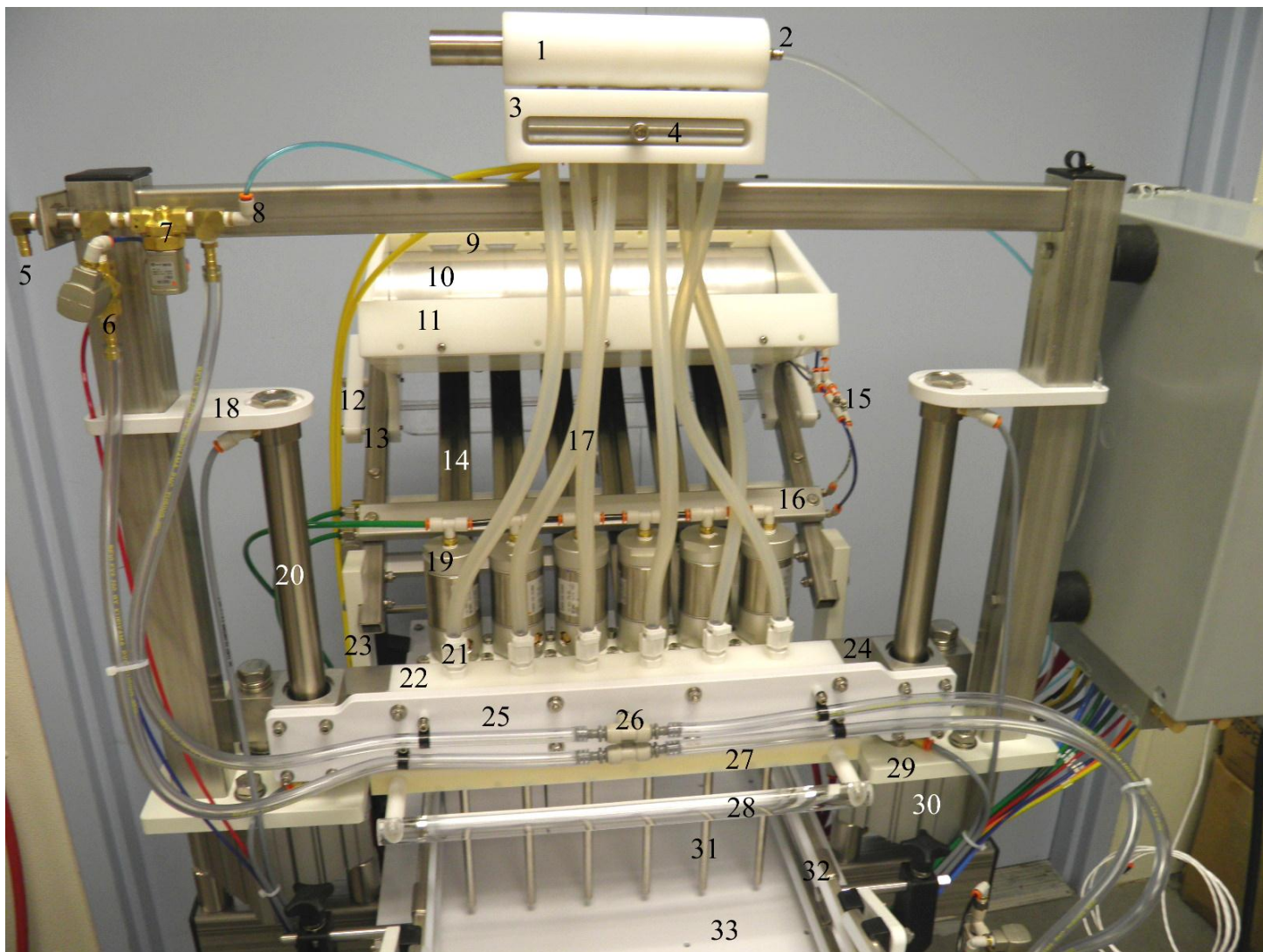
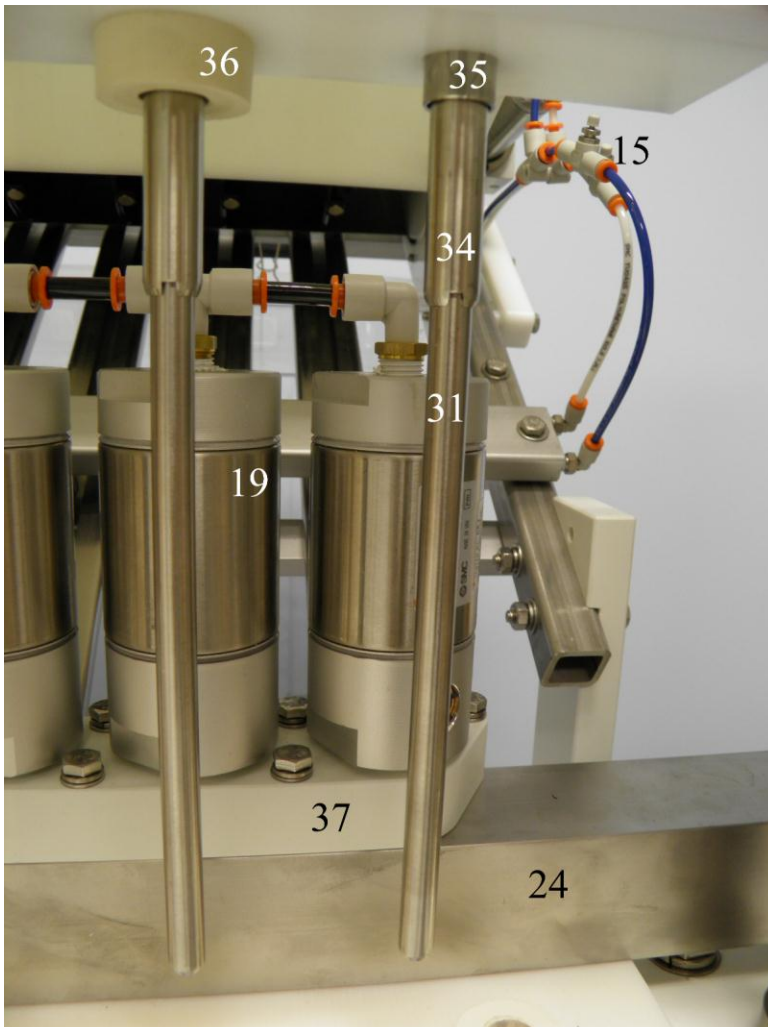


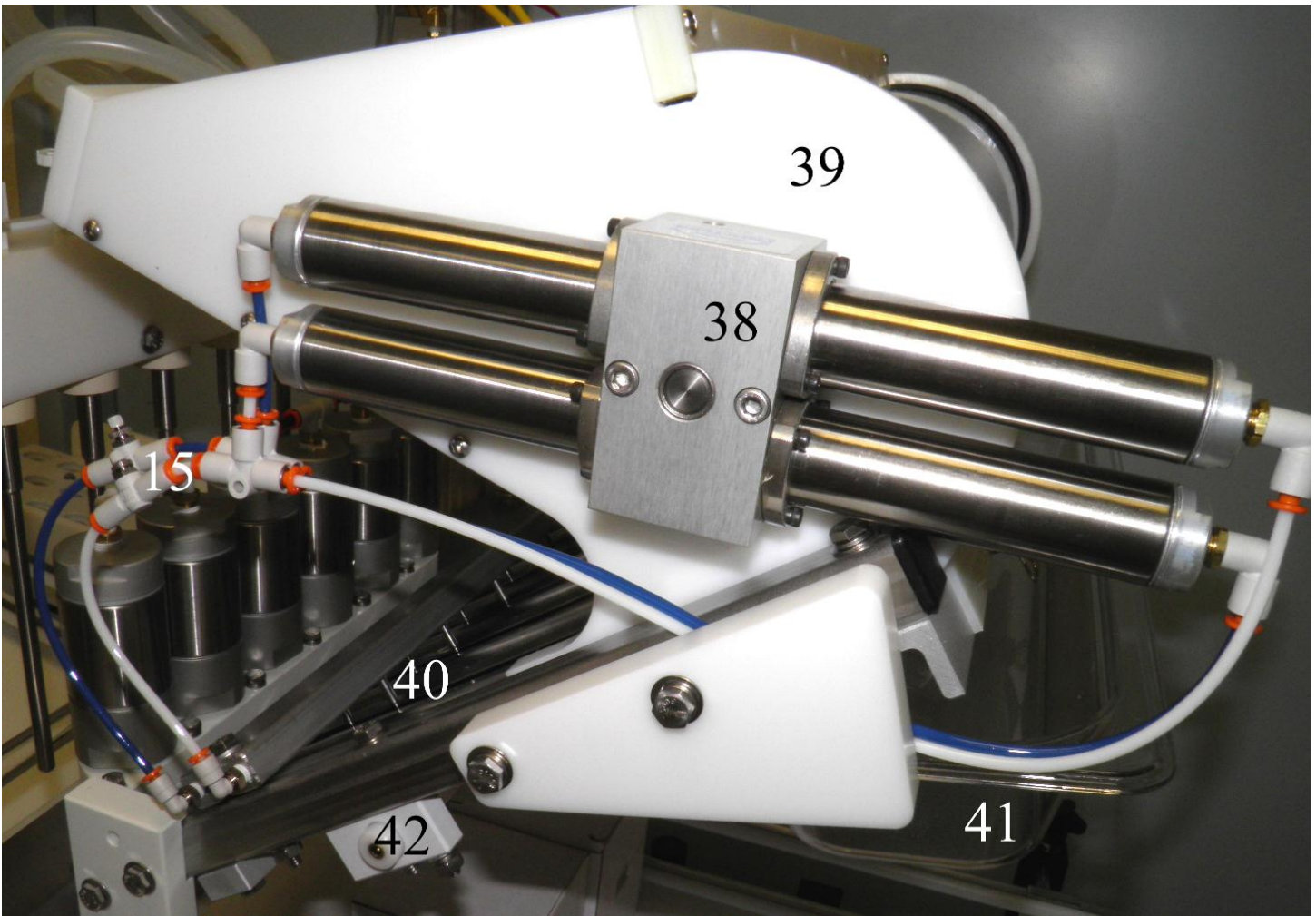
# Merlin "N" Series parts and components



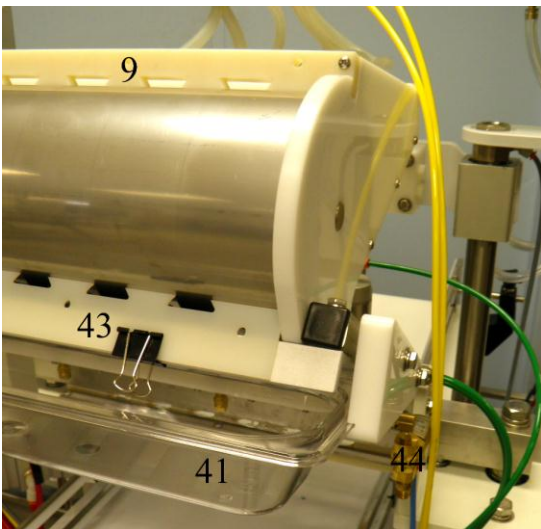
Part#	Description/function	Order#
1	Product manifold 1" SS connection x 6 3/8" connections	Manifold
2	Product line sensor fitting FDA 1/8npt x 5/32" tube	5523K12
3	Fill valve product hose guide	Description
4	Fill valve tubing pinch bar 3/4" diameter	Description
5	CO2 connection	
6	CO2 Valve	0V113
7	CO2 Pulse valve	0V113
8	Bottle pressure sensor connection 5/32" clear-blue	
9	Primary crown excluder, nylon	Description
10	Crown sorter drum SS	
11	Crown sorter hopper	
12	Crown tray support bracket L & R	
13	Crown feed frame	
14	Crown slide SS	
15	Crown sorter speed controls for adjusting rotation speed 2 required 5/32" in-line	6A650
16	Crown feed pin drop uses 2) SM-2 pneumatic pins per slide	

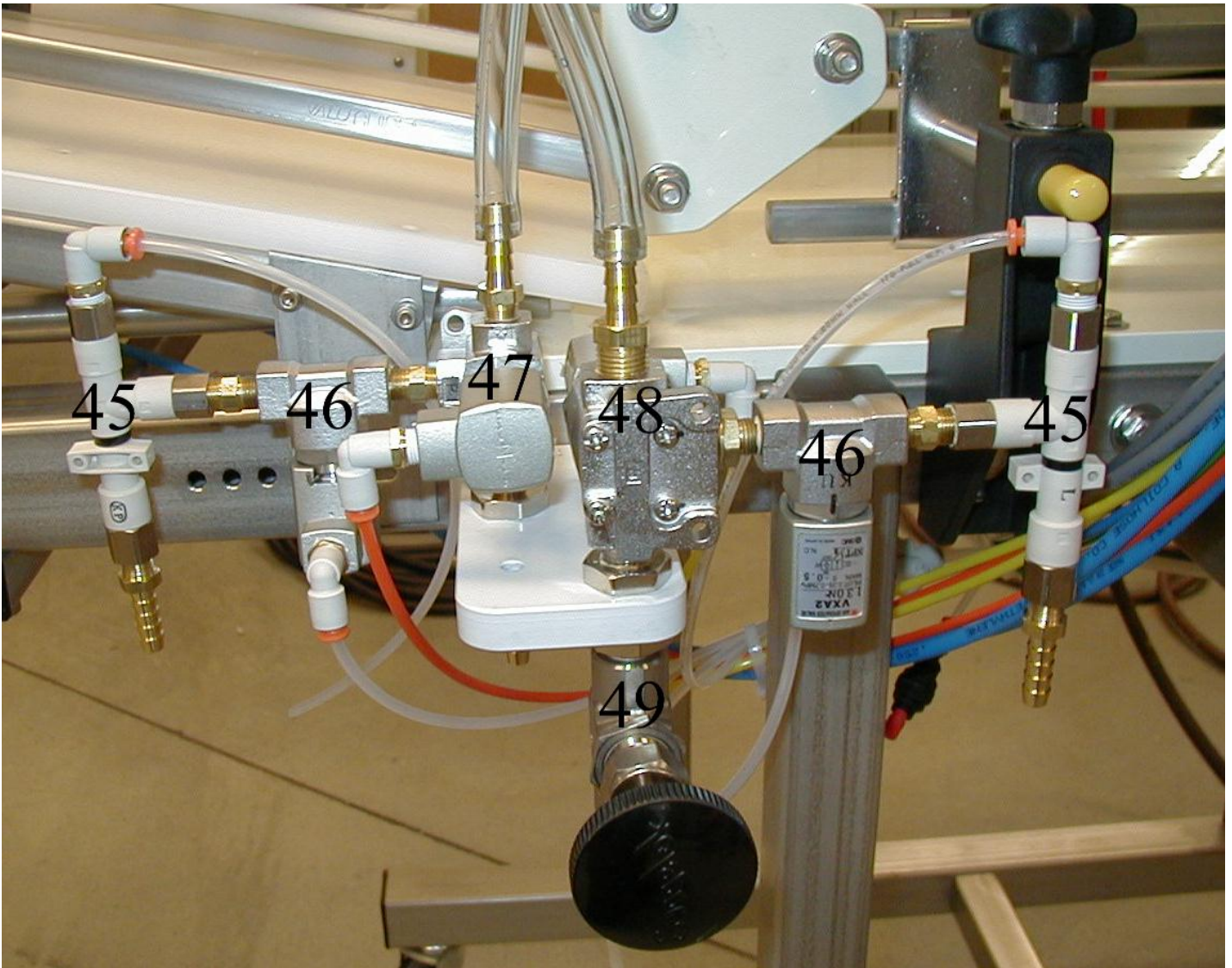
Part#	Description/function	Order#
17	Silicone beverage hose durometer 50, 9/16" for 3/8" fill tubes, 1/2" for 5/16" tubes	Description
18	Upper fill head cylinder mount PVC	
19	Bottle ejection cylinder, hold bottles on deck when crowner moves up	Description
20	Rodless fill head air cylinder, stroke varies	Description
21	Male connector holds filling tube in place, 3/8" or 5/16" depending on fill tube size	Description
22	Fill head main block, holds fill tubes, off-gas tubes and Snift tubes pressed in place	Description
23	Riser block, secures crown feeder frame to nose plates	
24	Crowner bar 2x2" SS solid bar, crown swages machined	
25	Fill head carriage 1/2" PVC	Description
26	Fill head gas connection "T" 2 required 5/16" with stem adaptor	Description
27	Bottle locator, 1" Nylon, mounts to under crowner, locates bottles filling and crowning	Description
28	Bottle separator bar, not used on all machines, magnetically coupled	Description
29	Nose plate, secures frame, riser blocks and fill head cylinders to crowning cylinder	Description
30	Crown cylinder 125mm	Description
31	Filling tube	
32	Bottle guide rails	
33	Deck, bottles slide on the deck, 1/2" PVC	
34	Off-Gas tube releases gas from bottle, sets fill point, customer for each machine	Description
35	Snift tube, holds bottle seal and releases gas, pressed into filler block	
36	Rubber bottle seal	Description
37	Bottle ejection mount	



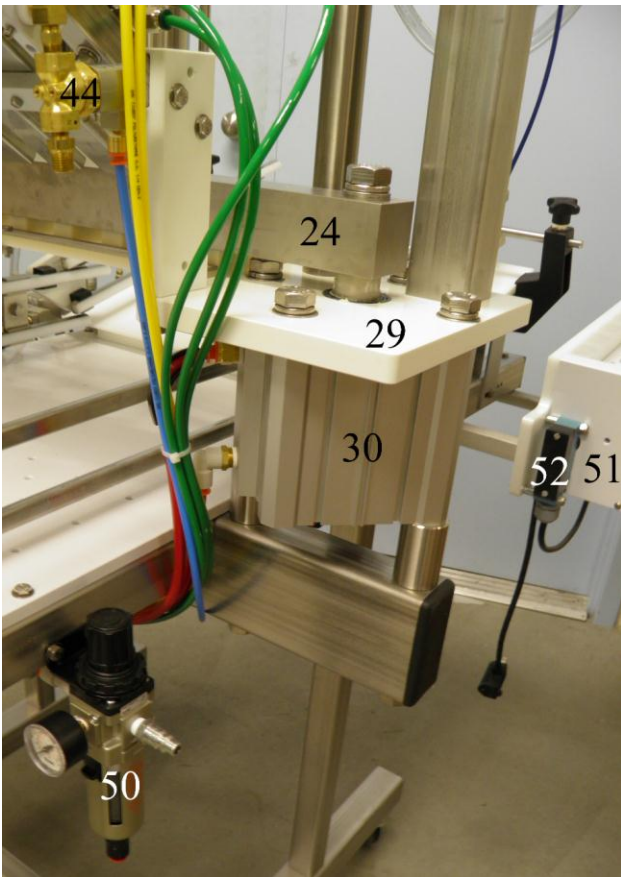


Part#	Description/function	Order#
38	Rotator for crown sorter rotates 450 degrees each way	7R101
39	Crown sorter side plate	
40	Crown escapement pins 2 required per crown slide	SM-2
41	Crown catch tray	Description
42	After crowning spray bar	
43	Secondary crown excluder, ensures crowns enter slides correct side up.	Description
44	After crowning spray control valve	0V113

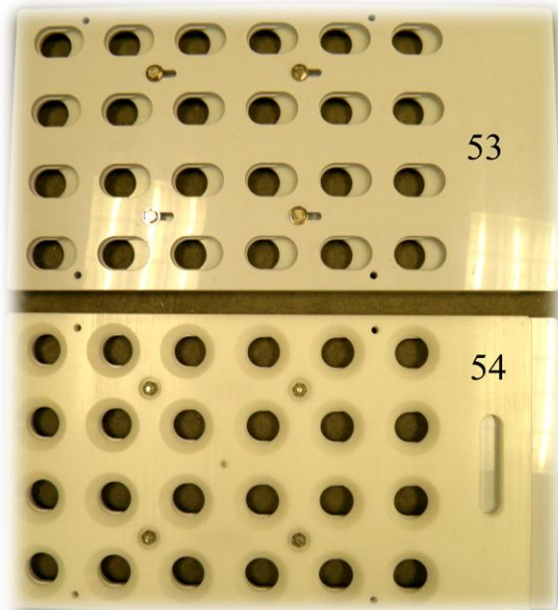


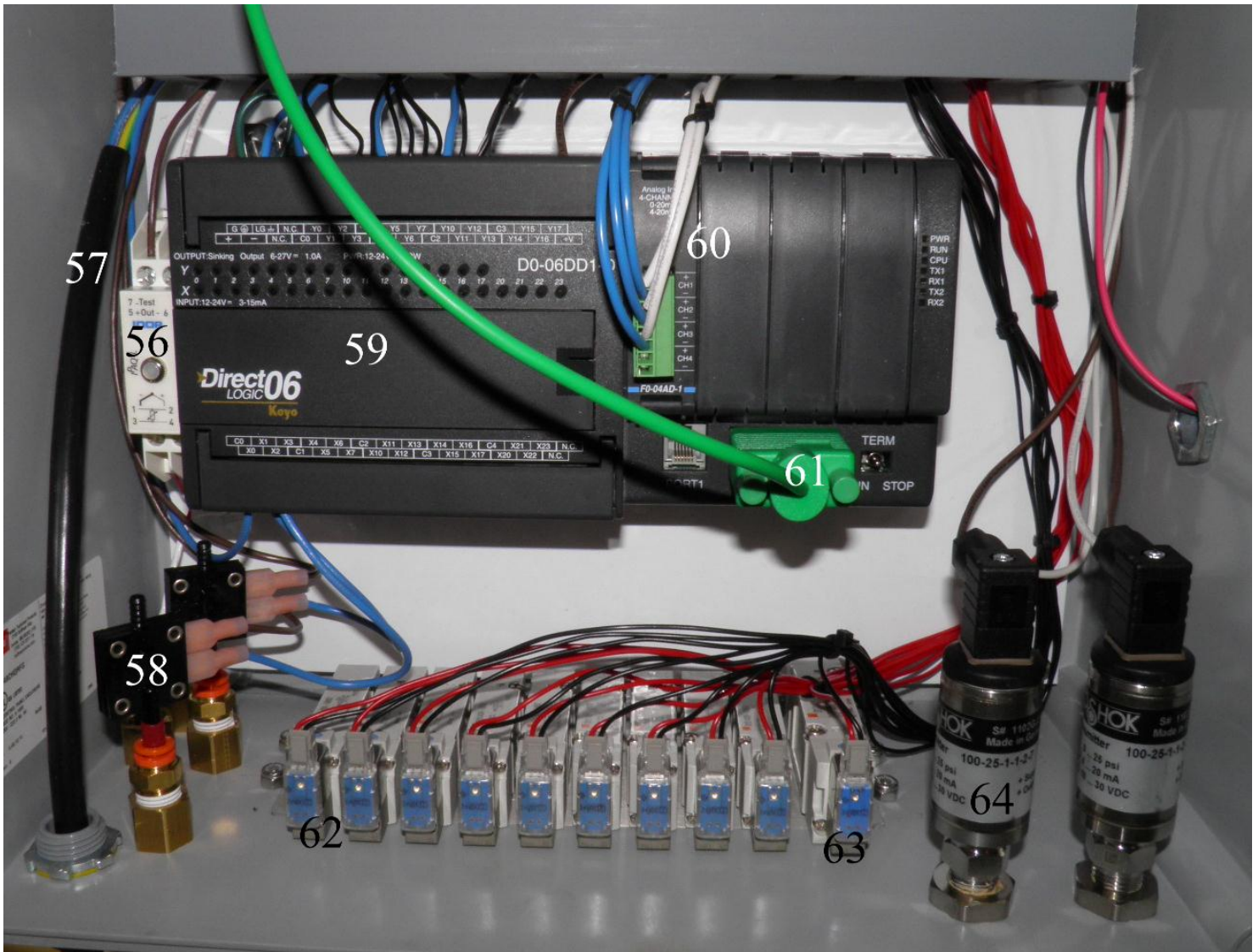


Part#	Description/function	Order#
45	Eductor, creates vacuum, 2 required	Description
46	Block valve, 2-way SS body, 2 required	Description
47	Snift control valve 3-way, SS body 1/4npt ports	Description
48	Speed valve, 3-way, SS body 1/4npt ports	Description
49	Manual speed control valve with black knob	Description



Part#	Description/function	Order#
50	Air regulator/filter rated at 70scfm@90psi	Description
51	Bottle rinsing tray	
52	Bottle rinsing switch, turns pump on/off	Description
53	Bottle handling plate key hole side	Description
54	Bottle handling plate round hole side	Description
55	Rinsing spray bar 4 required by bottle size	Description





Part#	Description/function	Order#
56	Temperature transmitter, provide temp signal to computer from product manifold	Description
57	Power supply cord 24VDC	
58	Bottle detection switch, 2 required	Description
59	Direct Logic 06 computer, programmed	Description
60	4-channel analog card, 3 channels used, product pressure, bottle pressure, temperature	Description
61	Communication cable to HMI interface	Description
62	SY5 solenoid valve, 9 required	Description
63	SY7 solenoid valve, 1 required, operates crowning head	Description
64	Pressure transducer 0-25psi, 2 required, product pressure, bottle pressure	Description
65	Bottle detection, pneumatic proximity sensor, 2 required, mounted on rails	Description

